

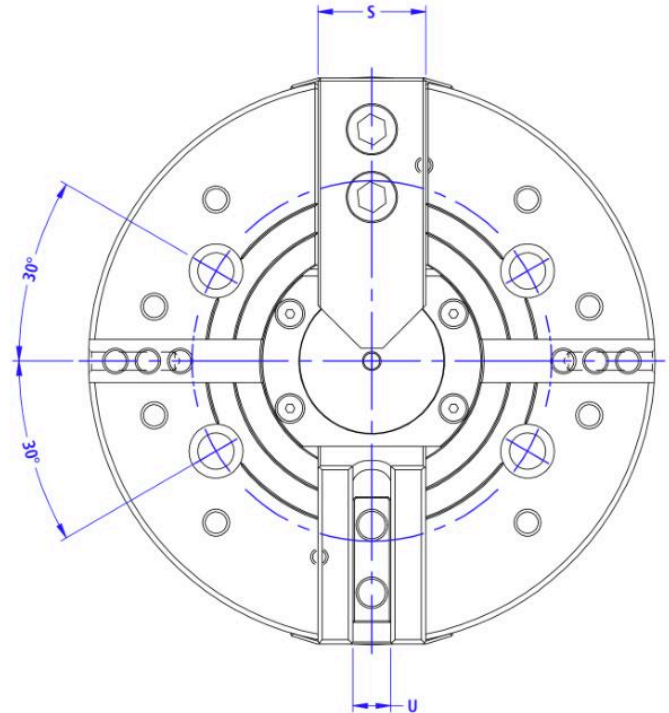
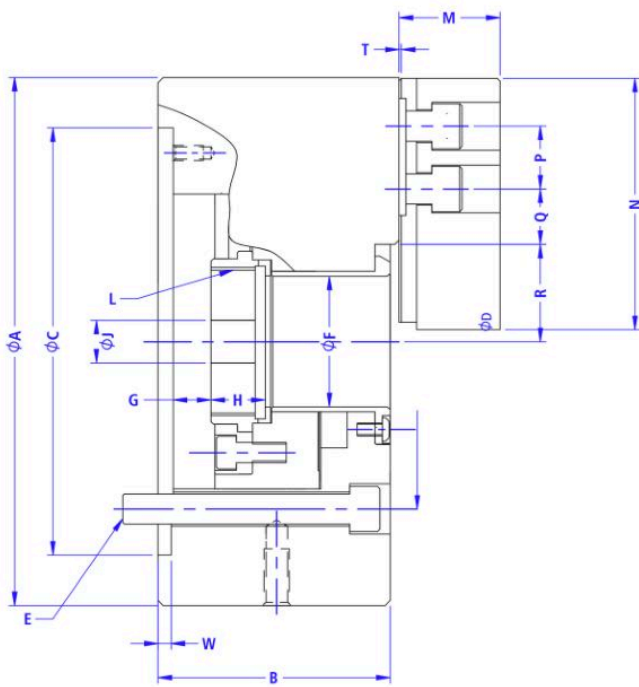
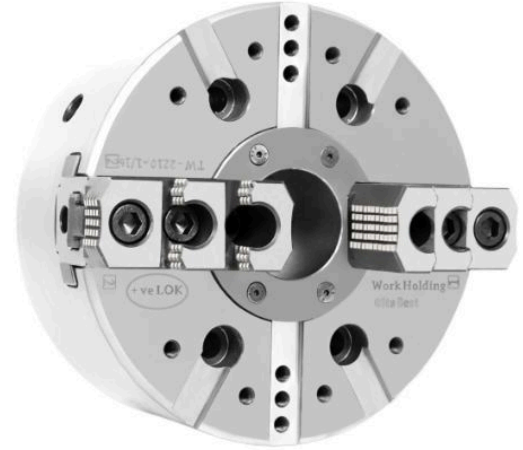


# POSITIVELOK CHUCKS

# 2 - JAW POWER CHUCK

## ► INTRODUCTION

- WEDGE-HOOK type 2-jaw chuck with an extra-large through-hole for enhanced versatility.
- All matching surfaces are hardened, precision-ground, and directly lubricated for optimal performance.
- Delivers outstanding rigidity and exceptional repeatability precision, ensuring reliable and accurate results.



## ► DIMENSIONS

Part No..	Thru Hole (mm)	Jaw Stroke (Diameter) (mm)	Plunger Stroke (mm)	Gripping Dia (External) (mm)		Max. Draw Bar Pull Force kN (kgf)	Max. Gripping Force kN (kgf)	Max. Speed min -1	Net weight with soft top jaws (kg)	Moment of Inertia kg.m <sup>3</sup>	Max. Pressure Mpa (kgf/cm <sup>2</sup> )
				Max.	Min.						
HTW - 2135	34	5.4	11	135	12	11.7 (1193)	24 (2447)	7000	6.08	0.006	2.38 (24.3)
HTW - 2170	45	5.5	12	170	14	14.5 (1479)	38 (3875)	6000	12.79	0.017	1.85 (18.9)
HTW - 2210	52	8.6	16	210	14	23.2 (2366)	57.3 (5843)	5000	22.07	0.056	1.8 (18.4)
HTW - 2254	75	8.8	19	254	31	28.5 (2906)	74 (7546)	4200	33.4	0.165	1.8 (18.4)
HTW - 2304	91	7.4	16	304	34	36.7 (3742)	96 (9789)	3300	56.12	0.308	1.81 (18.5)

## ► SPECIFICATIONS

Part No.	A	B	C (H6)	D	E	F	G (Max)	G (Min)	H	J	L Max.	M	N	P	Q (Max)	Q (Min)	R (Max)	R (Min)	S	U	W
HTW - 2135	135	61	110	82.55	4 - M10	34	1	-9	17	12	M40 x 1.5	34	60	14	19.75	7.75	26.5	23.8	32	10	4
HTW - 2170	169	82	140	104.8	6 - M10	45	11	-1	19	20	M55 x 2.0	38	80	20	22.75	9.25	32	29.25	35	12	6
HTW - 2210	210	92	170	133.4	6 - M12	52	14.5	-1.5	20.5	30	M60 x 2.0	40	100	25	29.75	14.75	38.7	35	38	14	6
HTW - 2254	254	101	220	171.4	6 - M16	75	8.5	-10.5	25	45	M85 x 2.0	50	120	30	33.75	14.25	51	46.6	40	16	6
HTW - 2304	304	111	220	171.4	6 - M16	91	8	-15	28	50	M100 x 2.0	50	140	30	45.75	15.75	61.3	66	50	18 / 21	6

## KIRAN INDUSTRIES

Reg. Office : Unit. C2 / Laghu Udhyog Kendra, IB Patel Road, Goregaon East, Mumbai - 400063, Maharashtra, INDIA.

MOB : +91 - 9969884470 / +91 - 9867599055

Email : sales@positivelok.com / brijeshpatel@positivelok.com

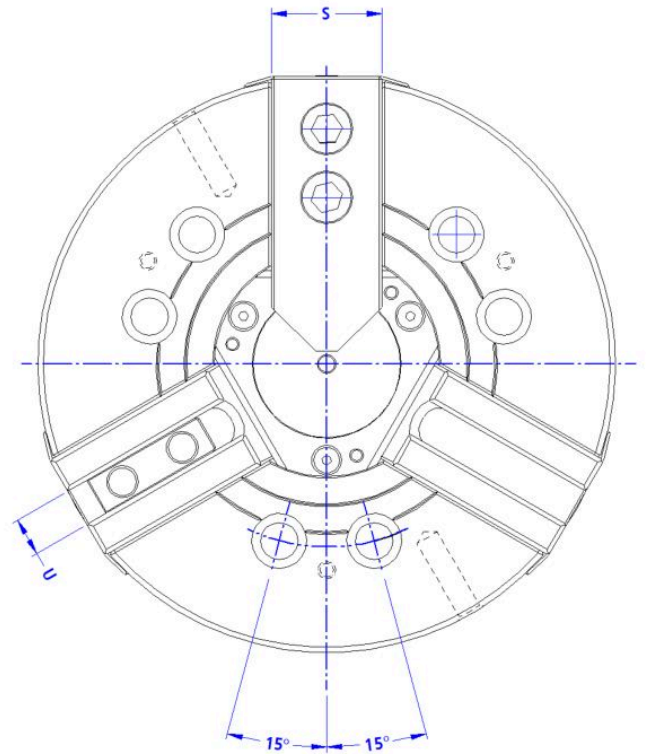
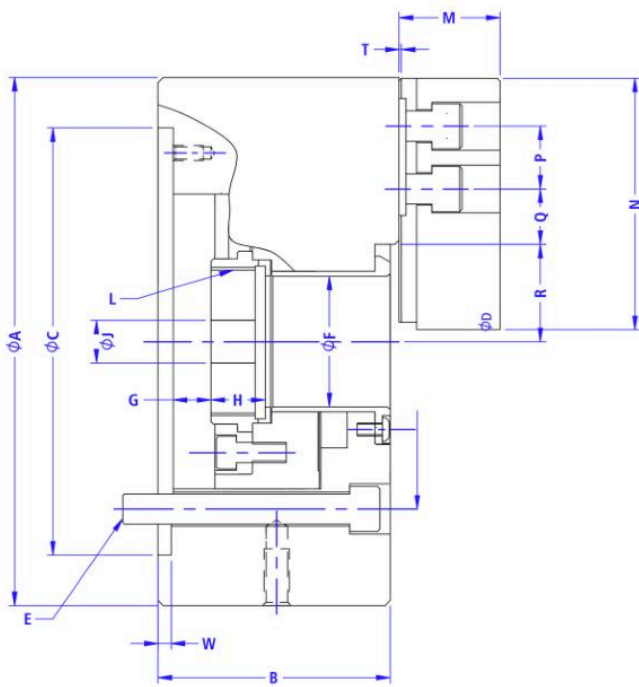
Website : www.positivelok.com



# 3 - JAW POWER CHUCK

## ► INTRODUCTION

- WEDGE-HOOK type 3-jaw chuck with an extra-large through-hole for enhanced versatility.
- All matching surfaces are hardened, precision-ground, and directly lubricated for optimal performance.
- Delivers outstanding rigidity and exceptional repeatability precision, ensuring reliable and accurate results.



## ► DIMENSIONS

Part No..	Thru Hole (mm)	Jaw Stroke (Diameter) (mm)	Plunger Stroke (mm)	Gripping Dia (External) (mm)		Max. Draw Bar Pull Force kN (kgf)	Max. Gripping Force kN (kgf)	Max. Speed min <sup>-1</sup>	Net weight with soft top jaws (kg)	Moment of Inertia kg.m <sup>3</sup>	Max. Pressure Mpa (kgf/cm <sup>2</sup> )
				Max.	Min.						
HTW - 3135	34	5.4	11	135	12	11.7 (1193)	24 (2447)	7000	6.5	0.006	2.38 (24.3)
HTW - 3170	45	5.5	12	170	14	14.5 (1479)	38 (3875)	6000	14	0.017	1.85 (18.9)
HTW - 3210	52	8.6	16	210	14	23.2 (2366)	57.3 (5843)	5000	22	0.056	1.8 (18.4)
HTW - 3254	75	8.8	19	254	31	28.5 (2906)	74 (7546)	4200	32	0.165	1.8 (18.4)
HTW - 3304	91	7.4	16	304	34	36.7 (3742)	96 (9789)	3300	56	0.308	1.81 (18.5)

## ► SPECIFICATIONS

Part No.	A	B	C (H6)	D	E	F	G (Max)	G (Min)	H	J	L Max.	M	N	P	Q (Max)	Q (Min)	R (Max)	R (Min)	S	U	W
HTW - 3135	135	61	110	82.55	4 - M10	34	1	-9	17	12	M40 x 1.5	34	60	14	19.75	7.75	26.5	23.8	32	10	4
HTW - 3170	169	82	140	104.8	4 - M10	45	11	-1	19	20	M55 x 2.0	38	80	20	22.75	9.25	32	29.25	35	12	6
HTW - 3210	210	92	170	133.4	4 - M12	52	14.5	-1.5	20.5	30	M60 x 2.0	40	100	25	29.75	14.75	38.7	35	38	14	6
HTW - 3254	254	101	220	171.4	4 - M16	75	8.5	-10.5	25	45	M85 x 2.0	50	120	30	33.75	14.25	51	46.6	40	16	6
HTW - 3304	304	111	220	171.4	4 - M16	91	8	-15	28	50	M100 x 2.0	50	140	30	45.75	15.75	61.3	66	50	18 / 21	6

## KIRAN INDUSTRIES

Reg. Office : Unit. C2 / Laghu Udhog Kendra, IB Patel Road, Goregaon East, Mumbai - 400063, Maharashtra, INDIA.

MOB : +91 - 9969884470 / +91 - 9867599055

Email : sales@positivelok.com / brijeshpatel@positivelok.com

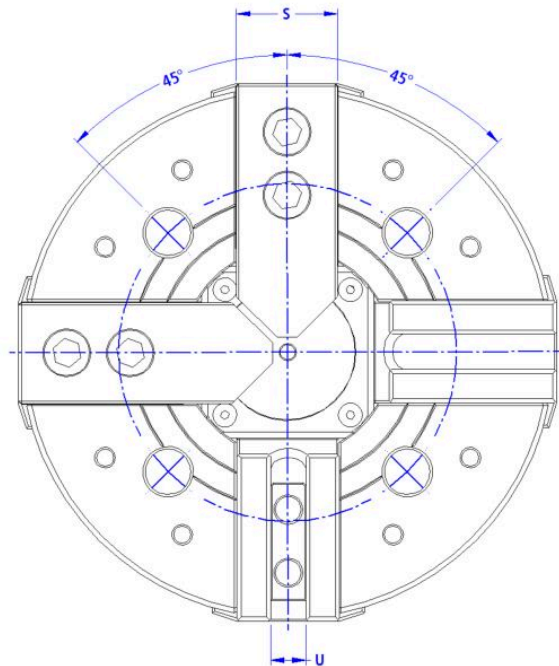
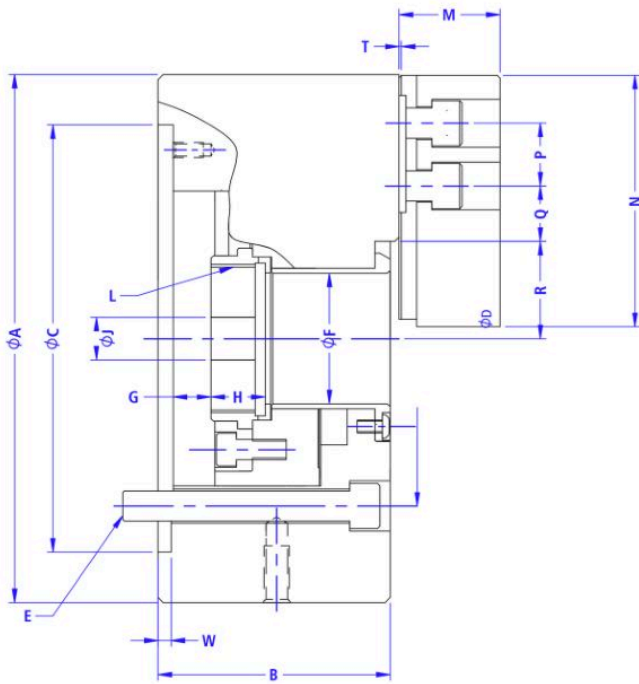
Website : www.positivelok.com



# 4 - JAW POWER CHUCK

## ► INTRODUCTION

- WEDGE-HOOK type 3-jaw chuck with an extra-large through-hole for enhanced versatility.
- All matching surfaces are hardened, precision-ground, and directly lubricated for optimal performance.
- Delivers outstanding rigidity and exceptional repeatability precision, ensuring reliable and accurate results.



## ► DIMENSIONS

Part No..	Thru Hole (mm)	Jaw Stroke (Diameter) (mm)	Plunger Stroke (mm)	Gripping Dia (External) (mm)		Max. Draw Bar Pull Force kN (kgf)		Max. Gripping Force kN (kgf)		Max. Speed min <sup>-1</sup>	Net weight with soft top jaws (kg)	Moment of Inertia kg.m <sup>3</sup>	Max. Pressure Mpa (kgf/cm <sup>2</sup> )	
				Max.	Min.									
HTW - 4170	45	5.5	12	170	14	14.5	(1479)	38	(3875)	6000	13.5	0.017	1.85	(18.9)
HTW - 4210	52	8.6	16	210	14	23.2	(2366)	57.3	(5843)	5000	23	0.056	1.8	(18.4)
HTW - 4254	75	8.8	19	254	31	28.5	(2906)	74	(7546)	4200	32	0.165	1.8	(18.4)
HTW - 4304	91	7.4	16	304	34	36.7	(3742)	96	(9789)	3300	57.5	0.308	1.81	(18.5)

## ► SPECIFICATIONS

Part No.	A	B	C (H6)	D	E	F	G (Max)	G (Min)	H	J	L Max.	M	N	P	Q (Max)	Q (Min)	R (Max)	R (Min)	S	U	W
HTW - 4170	169	82	140	104.8	6 - M10	45	11	-1	19	20	M55 x 2.0	38	80	20	22.75	9.25	32	29.25	35	12	6
HTW - 4210	210	92	170	133.4	6 - M12	52	14.5	-1.5	20.5	30	M60 x 2.0	40	100	25	29.75	14.75	38.7	35	38	14	6
HTW - 4254	254	101	220	171.4	6 - M16	75	8.5	-10.5	25	45	M85 x 2.0	50	120	30	33.75	14.25	51	46.6	40	16	6
HTW - 4304	304	111	220	171.4	6 - M16	91	8	-15	28	50	M100 x 2.0	50	140	30	45.75	15.75	61.3	66	50	18 / 21	6

## KIRAN INDUSTRIES

Reg. Office : Unit. C2 / Laghu Udhog Kendra, IB Patel Road, Goregaon East, Mumbai - 400063, Maharashtra, INDIA.

MOB : +91 - 9969884470 / +91 - 9867599055

Email : sales@positivelok.com / brijeshpatel@positivelok.com

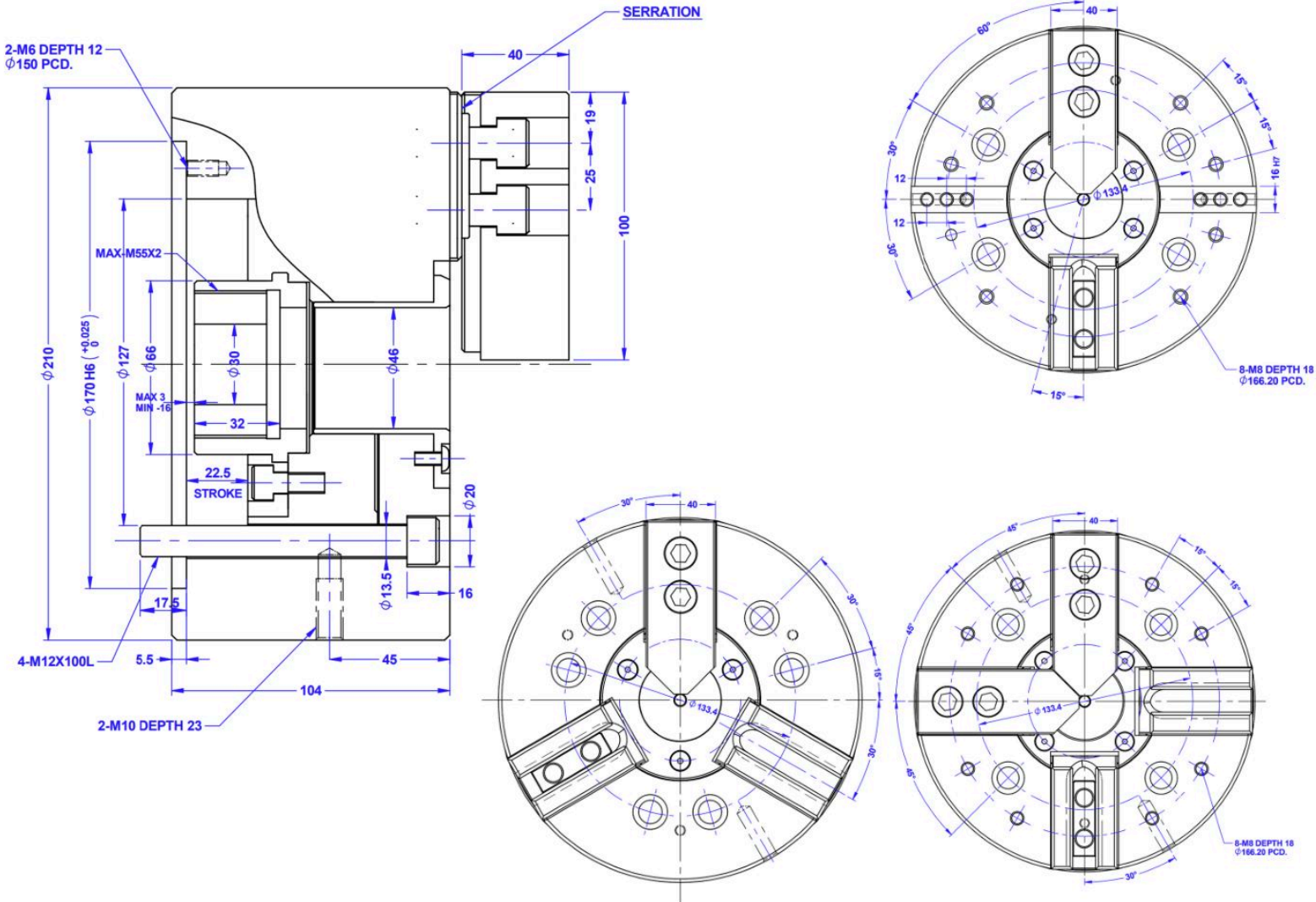
Website : www.positivelok.com



# EXTRA LONG STROKE

## ► INTRODUCTION

- WEDGE-HOOK type 3-jaw chuck with an extra-large through-hole and extra long jaw stroke for enhanced versatility.
- All matching surfaces are hardened, precision-ground, and directly lubricated for optimal performance.
- Delivers outstanding rigidity and exceptional repeatability precision, ensuring reliable and accurate results.



## ► DIMENSIONS

Part No..	Thru Hole (mm)	Jaw Stroke (Diameter) (mm)	Plunger Stroke (mm)	Gripping Dia (External) (mm)		Max. Draw Bar Pull Force Kn	Max. Gripping Force kN	Max. Speed min <sup>-1</sup>	Net weight with soft top jaws (kg)	Moment of Inertia kg.m <sup>3</sup>	Max. Pressure Mpa
				Max.	Min.						
HTWL - 2210	46	25	19	254	33	41.1	49	3300	25	0.198	2.99
HTWL - 3210	46	25	19	254	33	41.1	49	3300	25.2	0.198	2.99
HTWL - 4210	46	25	19	254	33	41.1	49	3300	26	0.198	2.99

## KIRAN INDUSTRIES

Reg. Office : Unit. C2 / Laghu Udhyog Kendra, IB Patel Road, Goregaon East, Mumbai - 400063, Maharashtra, INDIA.

MOB : +91 - 9969884470 / +91 - 9867599055

Email : sales@positivelok.com / brijeshpatel@positivelok.com

Website : www.positivelok.com





# PCRL - 42

## ► INTRODUCTION

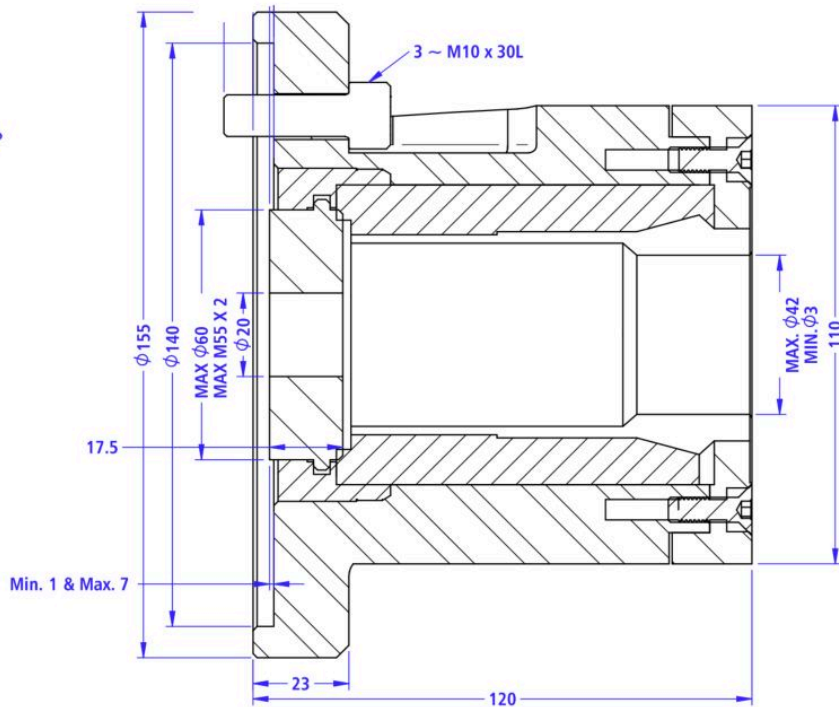
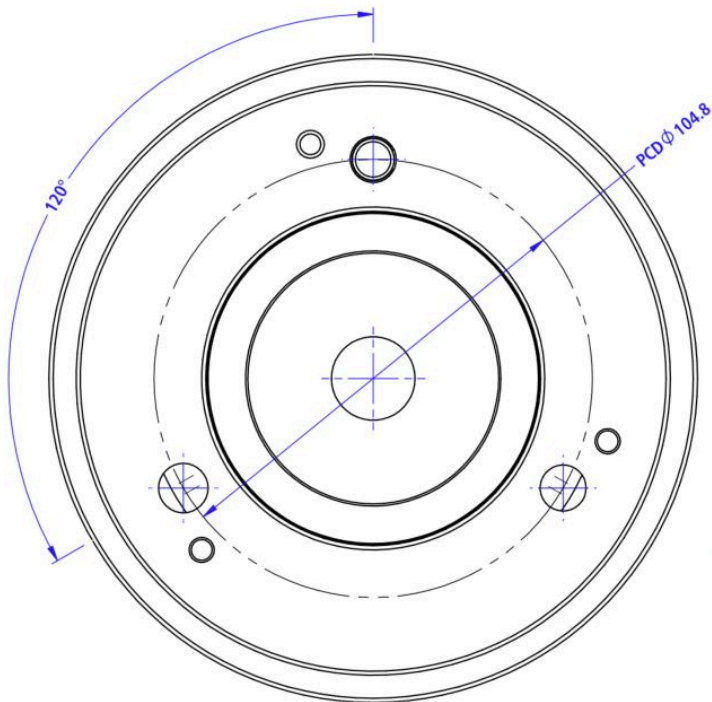
-PUSH type collets are primarily utilized on CNC turning, & special - purpose machines. They offer high clamping accuracy, high speed and high rigidity, and are sealed to protect against swarf, chips, and coolant. The collets must comply with DIN 6343 standards.

Features include :

- Fixed length for all secondary operations.
- Compact design to minimize overhang.
- High concentric accuracy.
- Supplied with a threaded / blank connector for threading to match the drawtube.
- All components are made of hardened and precision-ground alloy steel.



## ► DIMENSIONS



## ► SPECIFICATIONS

Plunger Stroke (mm)	Maximum Chuck Capacity (mm) (Round)	Maximum Chuck Capacity (mm) (Hexagon)	Maximum Chuck Capacity (mm) (Square)	Max. D.B. Pull Kn (kgf)	Max. Clamping Force Kn (kgf)	Max. Speed (min <sup>-1</sup> ) (rpm)
7	3 ~ 42	6 ~ 36	6 ~ 29	24.5 (2500)	52.0 (5300)	6000

## KIRAN INDUSTRIES

Reg. Office : Unit. C2 / Laghu Udhyog Kendra, IB Patel Road, Goregaon East, Mumbai - 400063, Maharashtra, INDIA.

MOB : +91 - 9969884470 / +91 - 9867599055

Email : sales@positivelok.com / brijeshpatel@positivelok.com

Website : www.positivelok.com



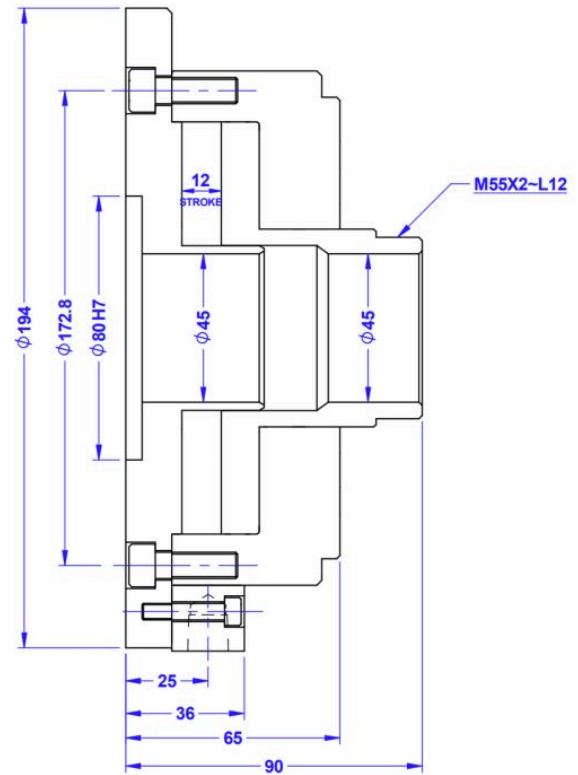
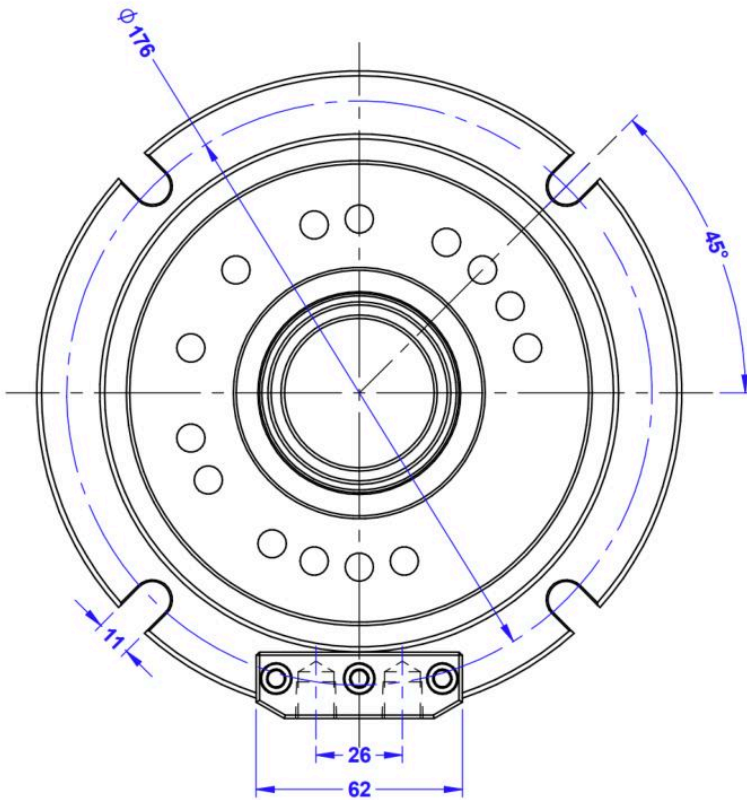
# PLSH - 42

## ► INTRODUCTION

- Stationary chuck base plate featuring compatibility with 2, 3, or 4 jaws power chuck.
- Perfectly suited for handling versatile and complex workpieces
- Simple and secure mounting on milling and drilling machines
- Effortlessly attaches to work gripper multiplates for enhanced versatility
- Compatible with both pneumatic and hydraulic pressure systems for optimal performance



## ► DIMENSIONS



## ► SPECIFICATIONS

Piston Stroke	Maximum Allowable Pressure		Maximum Thrust			Weight	Matching Chuck Size	
	Pneumatic	Hydraulic	Pneumatic	0.6 MPa (6 kgf/cm <sup>2</sup> )	Hydraulic			1.5 MPa (15.3 kgf/cm <sup>2</sup> )
12 mm	0.7 MPa (7 kgf/cm <sup>2</sup> )	1.5 MPa (7 kgf/cm <sup>2</sup> )	Push Pull	8.5 kN (867 kgf) 8.1 kN (826 kgf)	Push Pull	20.8 kN (2121 kgf) 20.1 kN (2050 kgf)	22.3 kg	6 Inch

## KIRAN INDUSTRIES

Reg. Office : Unit. C2 / Laghu Udhyog Kendra, IB Patel Road, Goregaon East, Mumbai - 400063, Maharashtra, INDIA.

MOB : +91 - 9969884470 / +91 - 9867599055

Email : sales@positivelok.com / brijeshpatel@positivelok.com

Website : www.positivelok.com

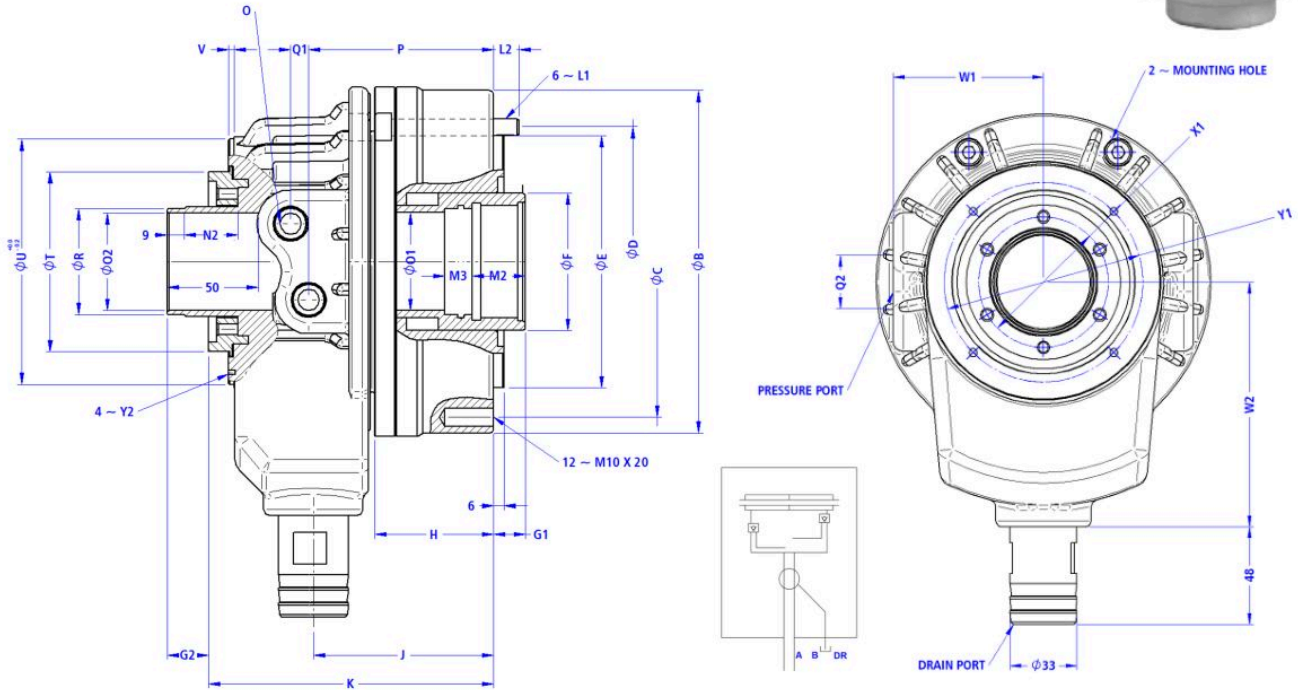


## ► INTRODUCTION

- Featuring a thin and lightweight design compared to traditional rotary cylinders, this model minimizes the mechanical load during high-speed rotation, making it highly efficient for dynamic applications.
- Safety construction: Equipped with a built-in non-return valve and a self-locking mechanism, this design ensures that thrust is maintained even in the event of a sudden pressure drop, providing reliable and safe operation.
- Installation flexibility: Designed for flexibility, it can be firmly locked at the rear end during installation, providing stability and simplifying the setup process.



## ► DIMENSIONS



## ► SPECIFICATIONS

Model	Piston area (cm <sup>2</sup> )		Max. Speed Min <sup>-1</sup> ( r.p.m )	Max. Operation Pressure		Moment of Inertia Kg.m <sup>2</sup>	Total Leakage L/min	Net Weight ( Kg )
	Push side	Pull side		Mpa	( Kg/cm <sup>2</sup> )			
HS - 428	53.2	50.5	8000	3.5	( 35 )	0.03	3	5
HS - 536	70.7	62.8	8000	4	( 40 )	0.05	3	7.4
HS - 646	99.1	88	7000	4	( 40 )	0.06	3	9.7
HS - 852	135.3	125	6500	4	( 40 )	0.11	3.9	11.8
HS - 1075	179.5	163.5	5000	4	( 40 )	0.24	4.2	21.5

Model	A	B	C	D	E (H7)	F	G1 (max)	G1 (min)	G2 (max)	G2 (min)	H	J	K	L1	L2	M1	M2	M3
HS - 428	90	126	100	112	80	40	10	0	23	13	53	88	135	M6 x 60	14	M33 x 1.5	25	15
HS - 536	105	142	115	125	100	48	15	0	27	12	65	94	150	M8 x 70	14	M42 x 1.5	25	15
HS - 646	125	165	140	147	100	65	15	0	28	13	68	86	153	M8 x 75	15	M55 x 2.0	30	15
HS - 852	150	185	170	165	130	70	20	0	30	10	73	102	164	M8 x 75	15	M60 x 2.0	30	15
HS - 1075	170	215	190	195	160	95	25	0	39	14	84	131	181	M10 x 90	20	M85 x 2.0	35	15

Model	N1	N2	O	O1 (H8)	O2 (H8)	P	Q1	Q2	R (G7)	T	U	V	W1	W2	X1	X2	Y1	Y2
HS - 428	M34 x 1.5	25	PT3/8	30	28	89	7	28	32	65	86	2	63	80	43	M4 x 8	76	M4 x 7
HS - 536	M44 x 1.5	28	PT3/8	38	36	104	7	34	42	73	98	2	66	106	54	M5 x 8	83	M5 x 6
HS - 646	M52 x 1.5	24	PT3/8	50	46	108	7	36	50	90	116	2	79	119	63	M6 x 8	98	M5 x 6
HS - 852	M58 x 1.5	25	PT3/8	55	52	113	8	40	56	97	128	2	82	133	72	M6 x 8	110	M5 x 6
HS - 1075	M84 x 2.0	30	PT3/8	80	75	126	10	46	81	135	163	2	98	160	98	M6 x 8	155	M6 x 8

## KIRAN INDUSTRIES

Reg. Office : Unit. C2 / Laghu Udhog Kendra, IB Patel Road, Goregaon East, Mumbai - 400063, Maharashtra, INDIA.

MOB : +91 - 9969884470 / +91 - 9867599055

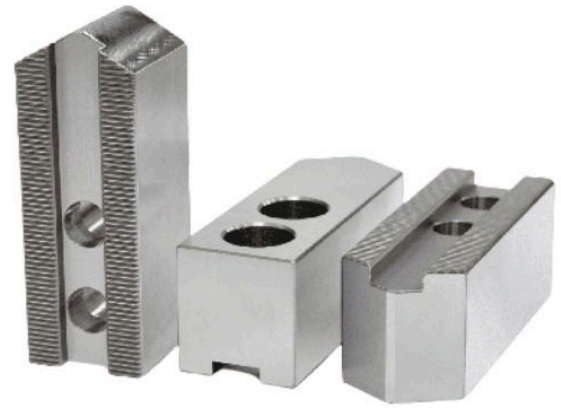
Email : sales@positivelok.com / brijeshpatel@positivelok.com

Website : www.positivelok.com

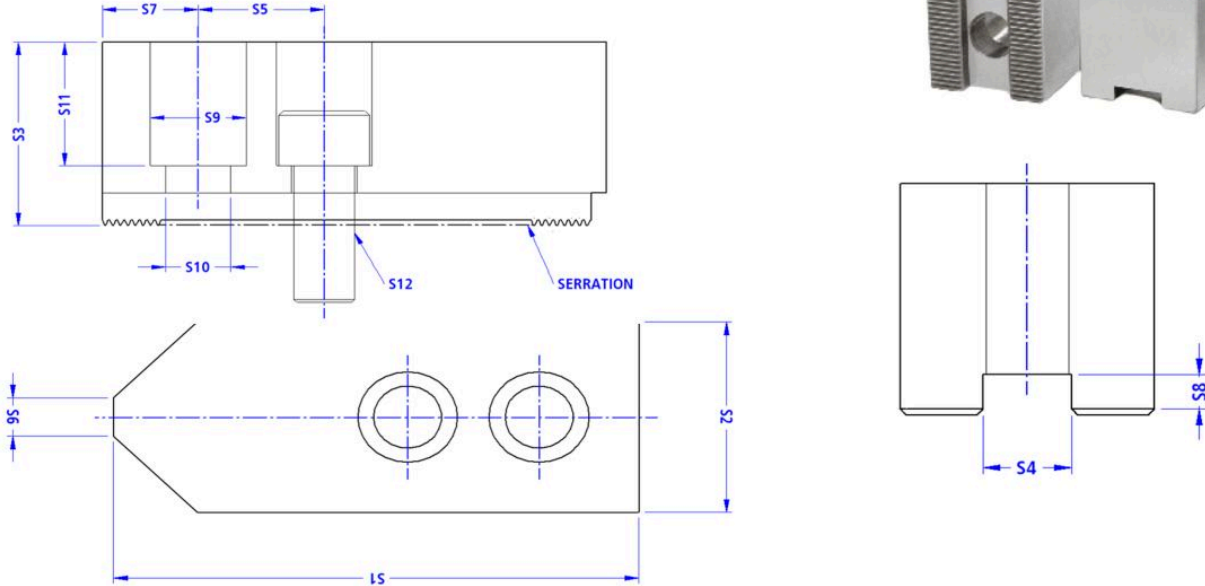


## ➤ INTRODUCTION

- Soft jaws can be expertly machined to wrap around most of an object's circumference, delivering a secure and custom grip.
- Lathe soft jaws excel at holding thin workpieces, providing exceptional stability and precision for intricate machining tasks.



## ➤ DIMENSIONS



## ➤ SPECIFICATIONS

Standard - Metric Soft Jaws														
Sr No.	Part Code	S1	S2	S3	S4	S5	S6	S7	S8	S9	S10	S11	S12	Serration
1	SJ/135	65	25	32	10	14	3	14	7	15	9	29	M8	1.5 x 60 / 1/16 x 90
2	SJ/170	80	30	40	12	20	6	15	7	17	11	27	M10	1.5 x 60 / 1/16 x 90
3	SJ/210	100	40	40	14	25	8	19	7	19	13	27	M12	1.5 x 60 / 1/16 x 90
4	SJ/254	120	50	40	16	30	8	25	7	19	13	36	M12	1.5 x 60 / 1/16 x 90
5	SJ/304	150	50	50	18	30	9	29.5	8	25	17	34	M16	1.5 x 60 / 1/16 x 90
6	SJ/304A	150	50	50	21	30	9	29.5	8	25	17	34	M16	1.5 x 60 / 1/16 x 90

Special - Metric Soft Jaws														
Sr No.	Part Code	S1	S2	S3	S4	S5	S6	S7	S8	S9	S10	S11	S12	Serration
1	SJ/135	65	25	40	10	14	3	14	7	15	9	29	M8	1.5 x 60 / 1/16 x 90
2	SJ/170	80	30	50/63/75/100	12	20	6	15	7	17	11	27	M10	1.5 x 60 / 1/16 x 90
3	SJ/210	100	40	40/63/75/100	14	25	8	19	7	19	13	27	M12	1.5 x 60 / 1/16 x 90
4	SJ/254	120	50	40/63/75/100	16	30	8	25	7	19	13	36	M12	1.5 x 60 / 1/16 x 90
5	SJ/304	150	50	50/63/75/100	18	30	9	29.5	8	25	17	34	M16	1.5 x 60 / 1/16 x 90
6	SJ/304A	150	50	50/63/75/100	21	30	9	29.5	8	25	17	34	M16	1.5 x 60 / 1/16 x 90

Standard - Inch Soft Jaws														
Sr No.	Part Code	S1	S2	S3	S4	S5	S6	S7	S8	S9	S10	S11	S12	Serration
1	SJ/135	65	25	32	10	14	3	14	7	15	9	29	M8	1.5 x 60 / 1/16 x 90
2	SJ/165	80	30	40	12	19	6	15	7	17	11	27	M10	1.5 x 60 / 1/16 x 90
3	SJ/200	100	40	40	17	19	8	19	7	19	13	27	M12	1.5 x 60 / 1/16 x 90
4	SJ/250	120	50	40	21	25	8	25	7	19	13	36	M12	1.5 x 60 / 1/16 x 90
5	SJ/300	150	50	50	18	25	9	29.5	8	25	17	34	M16	1.5 x 60 / 1/16 x 90
6	SJ/300A	150	50	50	21	25	9	29.5	8	25	17	34	M16	1.5 x 60 / 1/16 x 90

Special - Inch Soft Jaws														
Sr No.	Part Code	S1	S2	S3	S4	S5	S6	S7	S8	S9	S10	S11	S12	Serration
1	SJ/135	65	25	40	10	14	3	14	7	15	9	29	M8	1.5 x 60 / 1/16 x 90
2	SJ/165	80	30	40/63/75/100	12	19	6	15	7	17	11	27	M10	1.5 x 60 / 1/16 x 90
3	SJ/200	100	40	40/63/75/100	17	19	8	19	7	19	13	27	M12	1.5 x 60 / 1/16 x 90
4	SJ/250	120	50	40/63/75/100	21	25	8	25	7	19	13	36	M12	1.5 x 60 / 1/16 x 90
5	SJ/300	150	50	50/63/75/100	18	25	9	29.5	8	25	17	34	M16	1.5 x 60 / 1/16 x 90
6	SJ/300A	150	50	50/63/75/100	21	25	9	29.5	8	25	17	34	M16	1.5 x 60 / 1/16 x 90

## KIRAN INDUSTRIES

Reg. Office : Unit. C2 / Laghu Udhog Kendra, IB Patel Road, Goregaon East, Mumbai - 400063, Maharashtra, INDIA.

MOB : +91 - 9969884470 / +91 - 9867599055

Email : sales@positivelok.com / brijeshpatel@positivelok.com

Website : www.positivelok.com

